





ILEE[®] DIFFRACTIVE OPTICAL ELEMENTS

SHORT DESCRIPTION

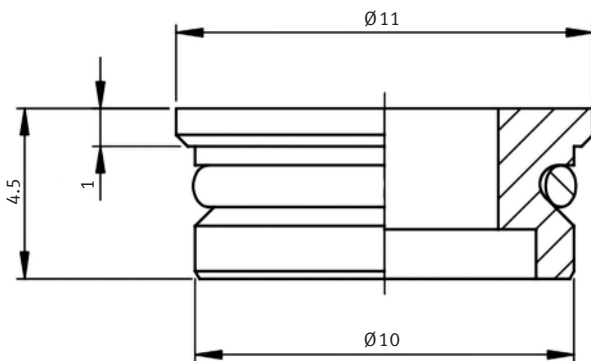
To generate patterns with a laser beam, arbitrary DOEs (Diffractive Optical Elements) can be plugged onto the ILEE[®] LDA MICROOPTICS laser.

TECHNICAL DATA

Description	Line width @ 100 mm distance ¹⁾	Pattern angle ¹⁾	Optimum wavelength range	Order number	Image
Crosshair DE-R 245	17.6 mm	10.0°	570 – 690 nm	0019-39-92-01	
QC-Line DE-R287	80 mm	44°	450 – 808 nm	0019-24-92-01	

¹⁾ @ wavelength 635 nm

DIMENSIONS (MM)



OPTIONS

We can mount a wide range of DOEs in our DOE holder, e.g:

- Multi Lines
- Lines & Dot Lines
- Dot Matrix
- Circles & Dot Circles
- Random Dot Patterns
- Viewfinder
- Special Patterns

For more information please contact us.

Rheinmetall Air Defence AG

Birchstrasse 155 · 8050 Zurich · Switzerland · Phone +4144 316 22 11
 ilee.rad@rheinmetall.com · www.rheinmetall.com/ilee

